

Original Research Article

Several Global Positioning System (GPS) Values Shown on Google Map and Kakao Map in Korean Field

Hyeonhi Regina Park¹, Rosa Kim², Alain Hamon³, Sohwa Therese Kim⁴, Sangdeog Augustin Kim^{5*}

¹Department of Elderly Care and Welfare, Joongbu University Kumsan, Republic of Korea (ROK)

²Specialité d'Economie Politique, Ecole des Hautes Études en Sciences Sociales (EHESS), Paris, France

³Groupe scolaire iféa - Émilie du Châtelet, 92110 Clichy, France

⁴Specialité de Sciences Sociales, Ecole des Hautes Études en Sciences Sociales (EHESS), Paris, France

⁵Department of Companion Animal and Animal Resources Science, Joongbu University, Kumsan, ROK

*Corresponding Author

Sangdeog Augustin Kim

Article History

Received: 27.01.2021

Accepted: 11.02.2021

Published: 18.02.2021

Abstract: Several Global positioning system (GPS) values were shown on Google map and Kakao map in Korean field. Global positioning system (GPS) was well used in Republic of Korea (Wikipedia, February 12, 2021). Kakao (<https://en.wikipedia.org/wiki/Kakao>, February 12, 2021.) map system was developed in Republic of Korea, and Google (<https://en.wikipedia.org/wiki/Google>, 12 February 2021) map system was in United States of America. And both of them were well utilized in geological studies in Republic of Korea. The present researchers measured Global positioning system (GPS) values on the spots near 7-8 Kyotchon-dong Yuseong-gu Daejeon in Republic of Korea. They used a cell phone of Android series, took global positioning system (GPS) values. In order to know the result, the present researchers tried to compare the shape of the curve, and the researchers found the similar cone on both the map systems. Figure 1 and Figure 2 show that these two map systems have similar position.

Keywords: Global positioning system (GPS), Google map, Kakao map, Korean field.

INTRODUCTION

Global positioning system (GPS) was well used in Republic of Korea (Wikipedia, February 12, 2021). Kakao (<https://en.wikipedia.org/wiki/Kakao>, February 12, 2021[1].) map system was developed in Republic of Korea, and Google (<https://en.wikipedia.org/wiki/Google>, 12 February 2021)[2, 3] map system was in United States of America. And both of them were well utilized in geological studies in Republic of Korea. But the fact that which method is better is not known until now. So the present researchers tried to find this experiment.

MATERIALS AND METHODS

The present researchers measured Global positioning system (GPS) values on the spots near 7-8 Kyotchon-dong Yuseong-gu Daejeon in Republic of Korea. They used a cell phone of Android series, took global positioning system (GPS) values. And they spread the values on Google map and on Kakao map system.

RESULTS AND DISCUSSION

The Global positioning system (GPS) values obtained were as follows;

0 m (kyotchon 7-8) N 36.311434 E 127.308319,

-10 m N 36.311654 E 127.308657,

-100 m N 36.311864 E 127.308986,

-200 m N 36.312114 E 127.309387,

-300 m N 36.312342 E 127.309765,

-600 m N 36.312856 E 127.310555,

-700 m N 36.313133 E 127.310984.

Copyright © 2021 The Author(s): This is an open-access article distributed under the terms of the Creative Commons Attribution 4.0 International License (CC BY-NC 4.0) which permits unrestricted use, distribution, and reproduction in any medium for non-commercial use provided the original author and source are credited.

In order to know the result, the present researchers tried to compare the shape of the curve, and the researchers found the similar cone on both the map systems. Figure 1 and Figure 2 show that these two map systems have similar position. But the site studied was small, so more researches will be necessary in order to know the exact result of this study.

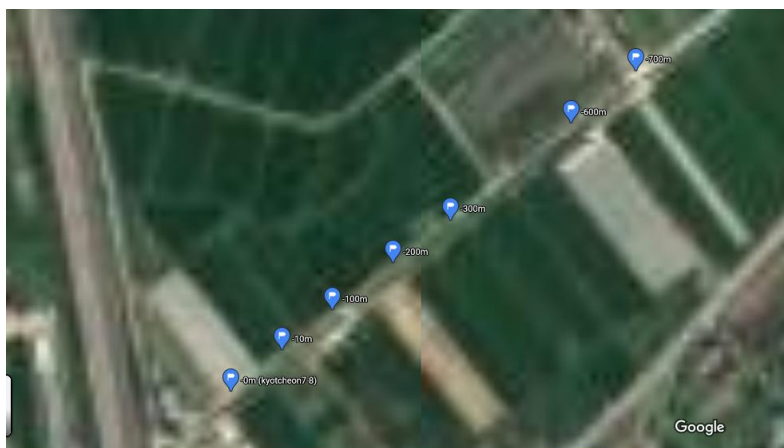


Fig-1: Seven GPS values on Google map system

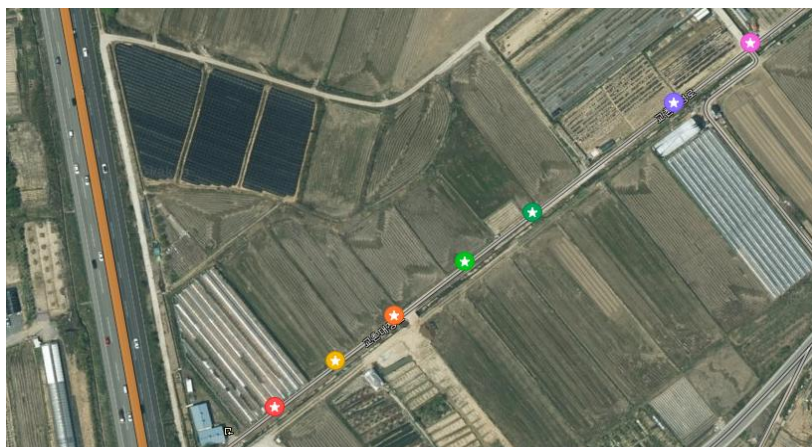


Fig-2: Seven GPS values on Kakao map system

ACKNOWLEDGEMENTS

The present researchers thank Mrs Hilye Sarah Kim and Mr Yeonghag Park, Mrs Bohwa Kim and Mr Ilsoo Joseph Kim and Jieun Agatha and Kunjoo Daegon-Andrea and Jiah Anna Kim, Father Jean Blanc and Father Hifumi Iwazaki, Professor Tae Song Koh and Professor Shigekata Yoshida, Mrs Tamako Hayashi and Mr Yoshihiro Hayashi, Mrs Francine Tenaillon and Professor Nicolas Tenaillon, Mr Man Gi Sim and his wife (the owners of the vinyl house in 7-8 Kyotchon-dong, Yuseong-gu, Daejeon), the member of Daejeon Ludovich of Ordo Franciscanus Saecularis, the member of Daejeon Nae-dong Catholic Church, the student of Joongbu University, and the Groundwater information management and service center of Korea Water Resources Corporation.

REFERENCES

1. https://en.wikipedia.org/wiki/Global_Positioning_System, 12 February 2021.
2. <https://en.wikipedia.org/wiki/Google>. February 12, 2021.
3. <https://en.wikipedia.org/wiki/Kakao>, February 12, 2021.

CITATION: Hyeonhi Regina Park *et al* (2021). Several Global Positioning System (GPS) Values Shown on Google Map and Kakao Map in Korean Field. *South Asian Res J Eng Tech*, 3(1): 42-43.